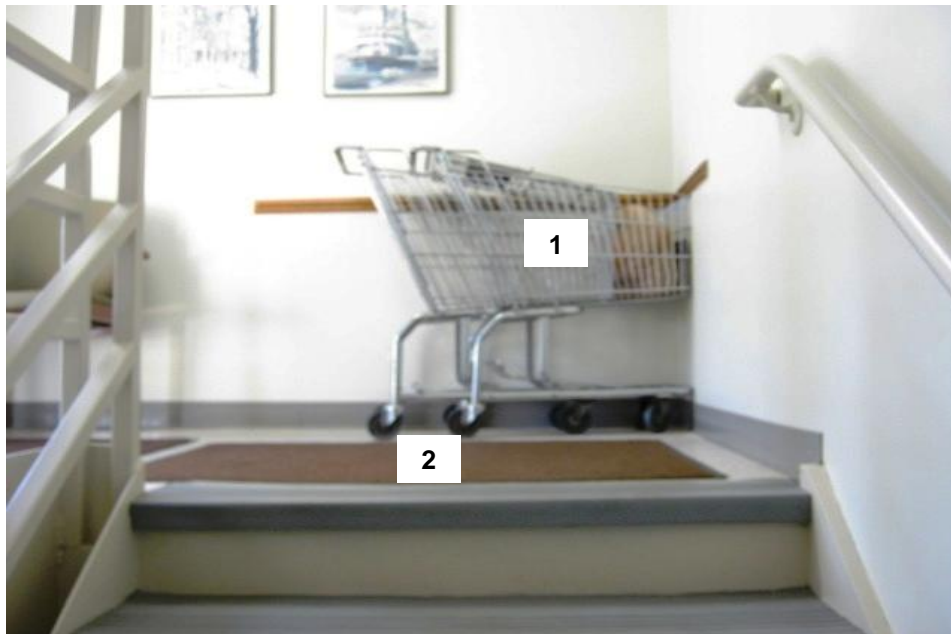




CAN YOU IDENTIFY THE HAZARDS?



© 2013 GuideOne Risk Resources for Health Care, a division of Lutheran Trust, Church Asset Management. All rights reserved.

This material is for informational purposes only. It is not intended to give specific legal or risk management advice, nor are any suggested checklists or actions plans intended to include or address all possible risk management exposures or solutions.

You are encouraged to consult with your own attorney or other expert consultants for a professional opinion specific to your situation.

1. Stairways should never be used for storage, even if temporarily. This exposure could lead to a serious **trip and fall** accident.
2. Under emergency situations, **evacuation** from the building using this stairwell would be greatly affected.

What Should be Done?

Stairwells should be kept clear of any material and should never be used for storage. In this example, the shopping cart should be removed from the stairwell and permanently relocated away from the premises.